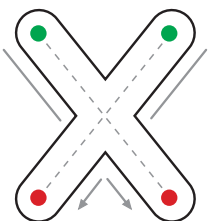


1



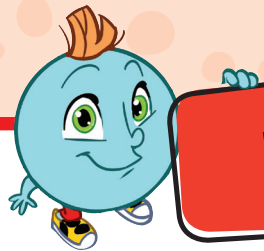
My school



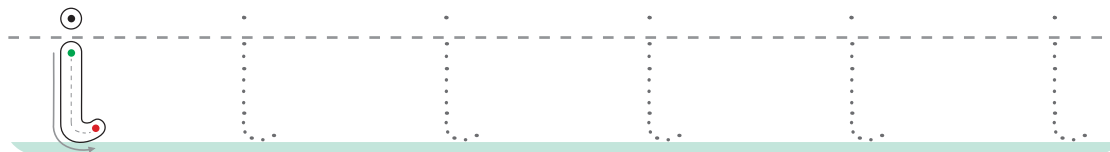
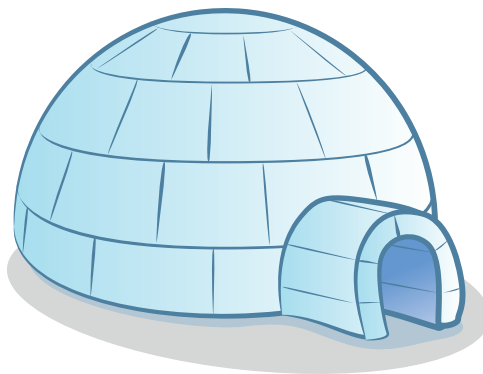
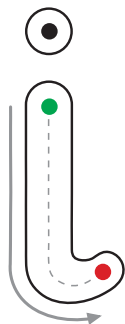
Handwriting practice lines consisting of solid top and bottom lines with a dashed middle line for tracing and copying.



2



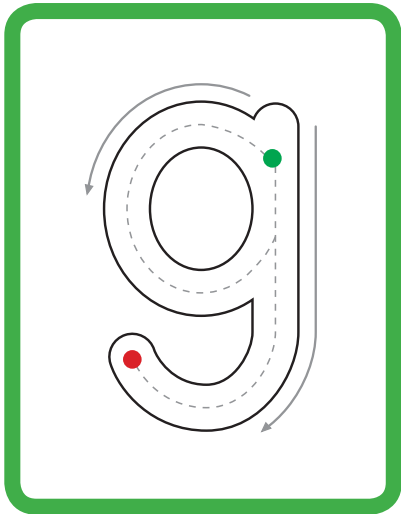
My house



3



My party

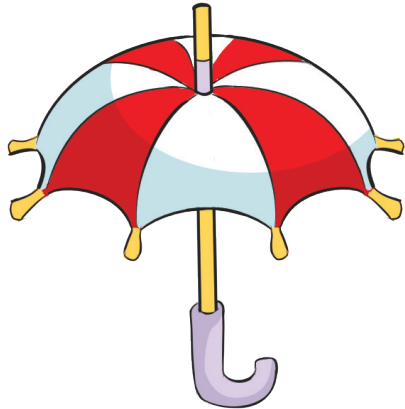
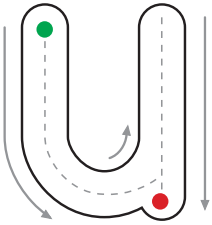


g g g g g g





My body



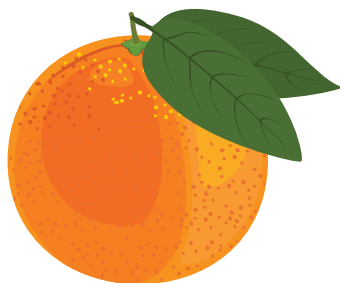
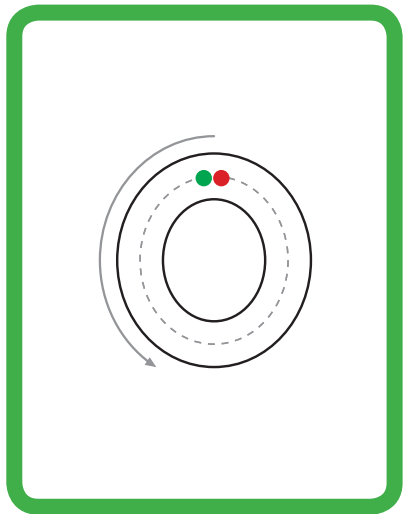
Four sets of handwriting practice lines, each consisting of a solid top line, a dashed middle line, and a solid bottom line.



5

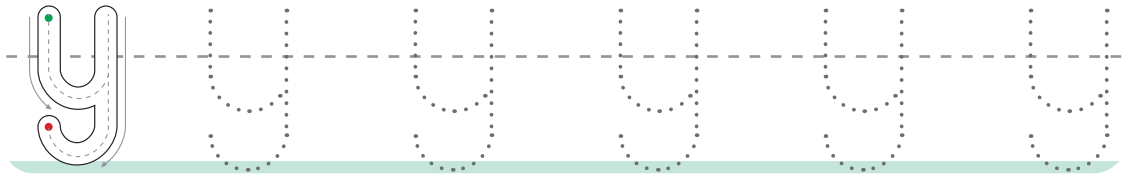
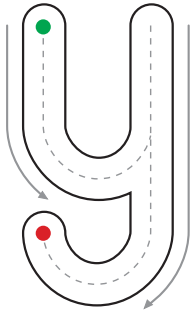


Wild animals

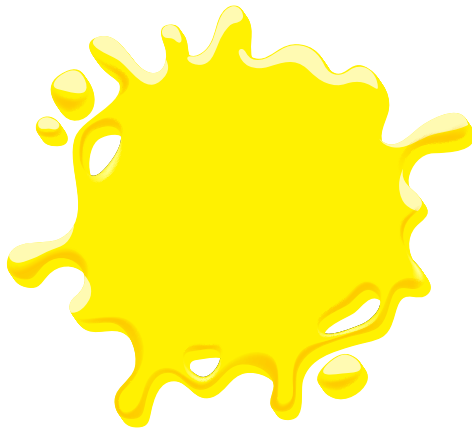


Handwriting practice lines consisting of two horizontal green lines, a dashed midline, and two solid baseline lines. There are four sets of these lines for practice.





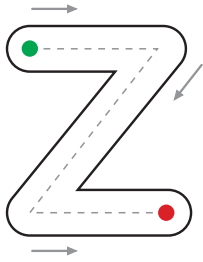
Blank handwriting practice lines for the letter 'y'. Each set consists of a solid top line, a dashed middle line, and a solid bottom line. There are two sets of these lines provided for independent practice.



7



My town



Tracing practice area for the letter 'z'. It features a row of five dashed lowercase 'z's on a three-line grid (top solid, middle dashed, bottom solid). Below this row are four more sets of empty three-line grids for independent practice.



